

Welkom

@BUTCHERSBREWHUIS



# BUTCHER'S BREWHUIS DELI

641-628-3440 • 820 MAIN STREET • PELLA, IA



## Boterham

HOT SANDWICHES

- GOEDENMORGEN** | \$10 | Bacon, scrambled eggs, and cheddar cheese on a flaky croissant. "GOOD MORNING"
- PELLA SMASH BURGER** | \$11 | Single patty with cheddar cheese, lettuce, tomato, onion, pickles, and mustard aioli. ADD slice of big PELLA BOLOGNA or BACON \$2
- JERRY'S TENDERLOIN** | \$12 | Fried tenderloin served on a brioche bun with lettuce, tomato, onions, and pickles.
- DOUBLE DUTCH** | \$7 | Two slices of In't Veld's big Pella Bologna topped with imported gouda cheese on a bakery rusk bun.
- DUTCH SPICED BEEF** | \$8 | Our specially seasoned slow cooked beef served with BBQ sauce on a bakery rusk bun.
- PULLED PORK** | \$9 | Our house-made seasoned pulled pork served with BBQ sauce on a bakery rusk bun.
- REUBEN** | \$9 | Swiss cheese, sauerkraut, and Thousand Island dressing on thick sliced rye bread. CORNED BEEF or PELLA BOLOGNA
- SAUSAGE GRINDER** | \$10 | In't Veld's Italian sausage on a hoagie with onions, peppers, and melted provolone cheese.
- TORPEDO** | \$9 | 2 slices chopped ham, 2 slices of our own Big Pella Bologna, cheddar & Swiss cheese, mustard, and mayo on a fresh bakery hoagie bun.

COLD SANDWICHES

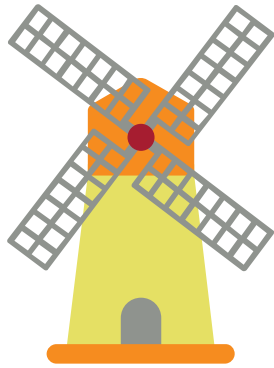
- HARVEST CHICKEN SALAD** | \$8 | Our house-made chicken salad with apples and dried cranberries. Served with lettuce on choice of fresh bakery CROISSANT or a WRAP.
  - ITALIAN HOAGIE** | \$10 | Ham, pepperoni, salami, capicola and provolone cheese on a hoagie, topped with lettuce, tomato, onion, and Italian dressing.
- ADD CHEESE - \$1    GLUTEN FREE BUN - \$2

**HOUSE-MADE SOUP**

---

**\$3 CUP**

**\$4 BOWL**



ADD TOASTED BAKERY RUSK BUN - \$1

## Toetje

DESSERT

- SCOTCHAROO** | \$2.50 | A chewy peanut butter and Rice Krispy dessert bar topped with melted chocolate and butterscotch chips.
- ALMOND BAR** | \$2.50 | House-made dessert bar rich in almond flavor just like a favorite treat from a Pella bakery.
- BREAD PUDDING** | \$5 | Our house-made specialty dessert served warm with whipped cream. Ask about this week's flavor.
- MOLTEN CHOCOLATE CAKE** | \$6.50 | Dutch chocolate cake with a rich molten chocolate center.

**KINDERMENU** KID FRIENDLY

- BOLOGNA ON A STICK** | \$6 | A generous serving of In't Veld's Pella bologna served hot on a stick! Comes with applesauce or chips.
- TOASTIE** | \$6 | Provolone and sharp cheddar cheese on thick sliced white bread. Served with applesauce or chips. GRILLED CHEESE

## Omhulsel

WRAPS

- CAROLINA PORK WRAP** | \$11 | Our house-made shredded pork, muenster cheese, and coleslaw on a tortilla wrap; pressed.
- DOUBLE DUTCH WRAP** | \$9 | In't Veld's Pella Bologna with imported Gouda cheese, lettuce, tomato, and mayo; pressed.
- DUTCH SPICED BEEF WRAP** | \$8 | House-made specially seasoned beef with aged cheddar, and BBQ sauce; pressed.
- GRILLED CHICKEN WRAP** | \$9 | Grilled chicken and cheddar cheese with lettuce, tomato, and ranch; pressed.

## Slaatje

SALADS

- SIDE SALAD** | \$4 | Mixed greens, croutons, cherry tomatoes, and shredded cheddar cheese with choice of dressing.
  - MAIN STREET SALAD** | \$8 | Mixed greens, croutons, bacon, cheddar cheese, cherry tomatoes with choice of dressing. **ADD GRILLED CHICKEN FOR \$3**
- DRESSINGS:** RANCH, ITALIAN, BLUE CHEESE, THOUSAND ISLAND & DUTCH POPPYSEED

**MAKE IT A MEAL DEAL! \$4**

ADD CHIPS, DESSERT BAR, AND A FOUNTAIN DRINK

## Bigerchten

SIDES

- HOUSE FRIES** | \$5 | Thick cut french fries, hot from our fryer, crispy and flavorful on the outside with a fluffy potato inside.
- BAKED BEANS** | \$2.50 | Our special house-made recipe with BBQ sauce, In't Veld's pulled pork, and onion.
- DUTCH COLESLAW** | \$2.50 | Coleslaw made with our sweet and tangy Dutch poppy seed dressing.
- DUTCH POTATO SALAD** | \$2.50 | Made with boiled eggs, bacon, and green onions in a sweet and tangy Dutch poppy seed dressing.
- PASTA SALAD** | \$2.50 | House-made creamy sweet pasta salad with peppers, onions, and carrots.
- OLD DUTCH POTATO CHIPS** | \$1.25 | Plain, BBQ, Dill Pickle, Jalapeno Cheddar, Mesquite BBQ, Salt & Vinegar

## Drinken

DRINKS

- FOUNTAIN DRINK** | \$2 |
- CAN OF SODA** | \$2 |
- COFFEE** | \$2 |
- BOTTLED WATER** | \$2 |
- BOTTLED MILK** | \$2 |
- BOTTLED TEA** | \$2.50 |

### BIER

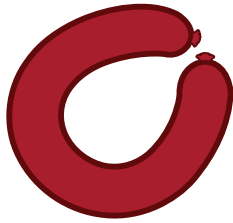
- COORS LIGHT** | \$6 | COORS BREWING
- MICHELOB ULTRA** | \$6 | ANHEUSER-BUSCH BREWING
- BUSCH LIGHT** | \$6 | ANHEUSER-BUSCH BREWING
- BLUE MOON** | \$7 | BLUE MOON
- FARMER JOHN** | \$7 | CONFLUENCE BREWING
- DES MOINES IPA** | \$7 | CONFLUENCE BREWING

### WIJN

- RED WINE**
  - PEPPERWOOD GROVE CABERNET SAUVIGNON** | \$6 |
  - PEPPERWOOD GROVE MERLOT** | \$6 |
- WHITE WINE**
  - PEPPERWOOD GROVE CHARDONNAY** | \$6 |
  - PEPPERWOOD GROVE PINOT GRIGIO** | \$6 |

NOTE: Although we offer a GF bun option, we cannot guarantee that any of our menu items are free from allergens as we use shared equipment and handle common allergens throughout our kitchen and restaurant. \*Consuming raw or undercooked meats, poultry, seafood, shellfish, or eggs may increase your risk of foodborne illness.

# Welkom



## IN'T VELD'S

**1** In't Veld's has a long tradition of providing quality eats and services since 1941 when Claus In't Veld established the market in Pella, Iowa. We are still proud to offer a complete meat counter providing fresh retail meats, a wide variety of award-winning specialty sausages, deli meats, imported cheeses, homemade salads, custom butchering and processing.

**9** From the friendly smile that greets you when you enter the store to the aroma of fresh smoked sausages and bacon, you will enjoy an "old world" shopping experience.

**4** Visit our store, which has a large retail area of full-service and self-service cases. You will want to take in our special atmosphere dotted with the history of agriculture of days gone by. Our knowledgeable and friendly staff will be happy to help you with any questions you may have.

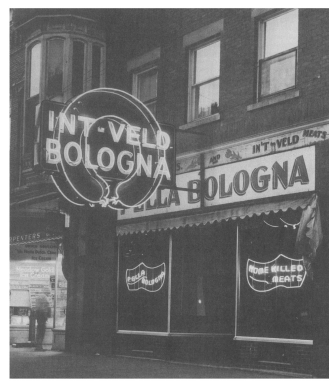
Good things have a way of coming together!



Allen & Stubenrauch's Drug Store

*Tradition combined with simplicity and respect!*

- **1861** The original brick building was constructed and housed a drug store.
- **1882** A fire destroyed six buildings on Main Street. The neighboring building fell into the 820 building. Frederick Brinkhoff made repairs.
- **1911** Brinkhoff constructed a "new and modern" building at 820 Main Street. His name still appears over the alley declaring it as Brinkhoff Block.
- **1923** Klaas In't Veld with his family, moved to Pella. His father worked as a bologna maker at Ulrich Meat Market and Klaas learned the trade.
- **1941** The IGA grocery store moved to 820 Main Street and invited Klaas In't Veld to join as a meat market.
- **1944** In't Veld's closed for 2 years during WWII.
- **1959** The grocery store closed and the meat market utilized the entire building.
- **1972** Klaas In't Veld retired after 31 years and sells the business.
- **2013** A major renovation occurred following severe water damage.

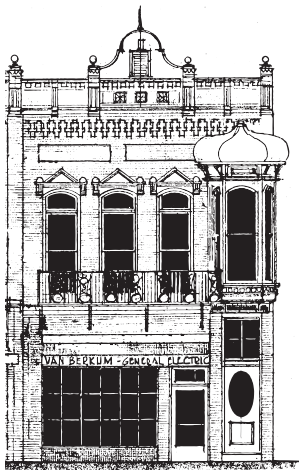


## BUTCHER'S BREWHUIS

**2** January 1, 2019, began the mammoth remodel of the 822 Main Street building. The entire 3 floors were gutted and reassembled keeping the original architectural details and history from the late 1800s when the building was originally constructed.

**0** The interior of the building is decorated with either artifacts from previous businesses housed on the property or farm memorabilia from the century farm that Jerry Roorda is the 5th generation owner. Delays in construction as well as Covid 19 pushed back opening until July of 2020 but full capacity was not reached until mid-2021.

**2** A modern industrial restaurant kitchen was added. Large cooler & freezer areas were built as well as expanded seating capacity, a fully functioning elevator and a unique rooftop bar with a beautiful view of downtown Pella.



### Details in the Remodel

- The 822 building was designed by Federick William Brinkhoff, a German architect. He designed several buildings in Pella and the signature Turret on the front of the building is a credit to his designs. Other details include the side brick pilasters with inset cross details.
- The tin ceiling on the first floor is original. Extra panels from the remodeled kitchen area were painted and installed in the 2nd floor bar area.
- The pendant lights on the first floor, 2nd floor bar area and the round table in the back corner of the 2nd floor (round table) were lights originally housed in Pella's first post office which was located 3 doors down on main street, now Thistles Flower Shop.
- The "tool bouquet" on the first-floor elevator wall are original farm tools from the Roorda farm and held together with Jerry's late father's belt.

- The bar top on the first floor was constructed by West End Salvage in Des Moines from some of the copper salvaged from a remodel of the state capital.
- Copper piping to house the soda/beer lines was salvaged from a remodel of a church in the neighboring town of Knoxville.
- The "alleyway" between the two buildings can be seen by looking up near the fountain drink station on the 2nd floor. When the new building was constructed, the front window casements were salvaged and relocated to the north side of the new building.
- The drugstore posters on the 2nd floor were found in the demolition of the building. They were found upside down as shelf liners - most likely viewed as inappropriate for downtown Pella during the 40s & 50s.

**1830-1910**  
Born in the Netherlands in 1830, Miss Siebertje Viersen and her family traveled to America in 1847. Miss Viersen accumulated wealth as a seller of lace and constructed the 822 building as an investment, the rooms on the second floor were used for her own apartment.

**1890** Dr. BF Keables Pharmacy  
**1912** Cole & Langerack Drugs  
BF Vander Linden & J Heerema  
Heerema Brothers  
**1955-2019** Puritan Drug Store  
Popular social spot with a soda fountain and Dutch Chocolate Ice Cream.  
VanBerkum Appliance

The 822 Main Street building was designed by Frederick Brinkhoff, a German architect. He designed several buildings in Pella and the signature Turret is a credit to his designs. Other details include the brick work and the side brick pilaster with insert cross details

**BUTCHER'S BREWHUIS**  
Our historic building sits in downtown Pella and tells a story all its own. The walls come alive with artifacts from its past and rustic brick walls blend with modern amenities and all the exquisite tastes of the city.

